

THE PAST SIX DECADES GLOBAL WARMING

Annual average, air
temperature has warmed at
1.5°C



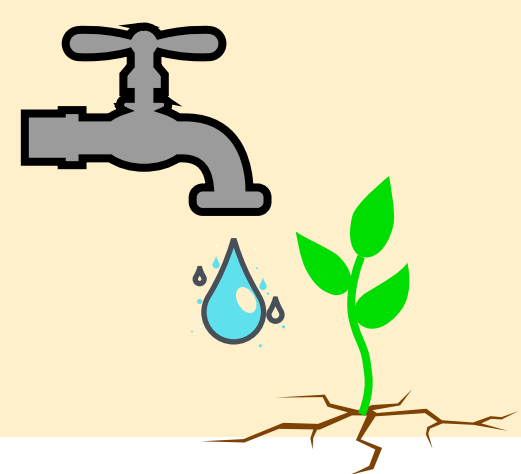
Heat waves

Tripled in frequency
reaching up to 50°C



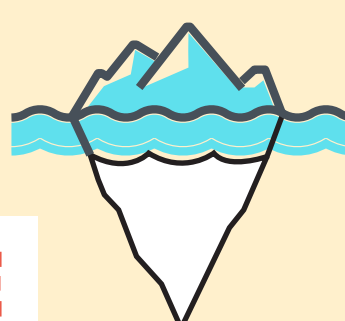
Floods, storms & Hurricanes

Increased rainfall in wet
regions & parched lands
in dry regions



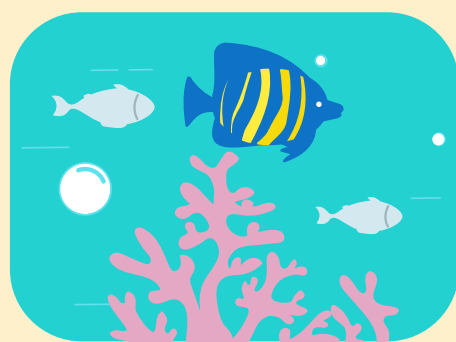
WATER AVAILABILITY

350 million
urban residents will be
expose to severe drought
by 2100



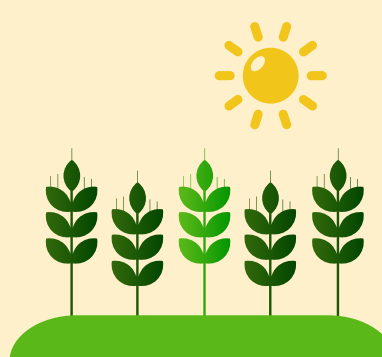
SEA-LEVEL RISE

81% permafrost (frozen
ground) that is melted releases
enormous amounts of methane.
Melting glaciers contribute to
rising sea levels of 98 centimeters



OCEANS

90% of the heat
trapped by greenhouse
gases absorbs into the
oceans. Corals have
practically vanished
under the effect of
ocean acidification



FOOD SUPPLY

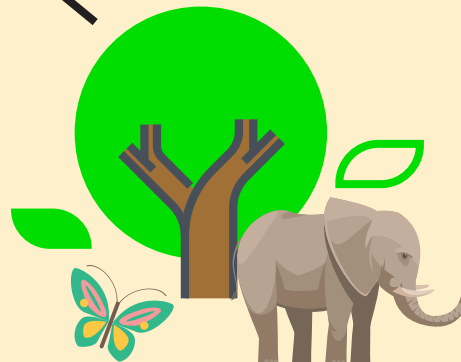
0.5°C warming
will consistently lead to
lower yields and lower
nutritional content in
tropical regions



CO2 EMISSIONS

80% annual emission of CO₂
are from burning of fossil fuels
(coal, oil & gas)

400ppm (parts per million)
the highest CO₂ level in 650,000
years recorded in 2014



ECOSYSTEM ON LAND

3.5 billion tons
CO₂ contibuted by deforestation & other
land use changes

6% of insects,
8% of plants and
4% of vertebrates will be affected

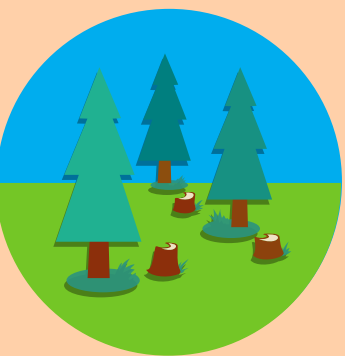
Main causes of global warming



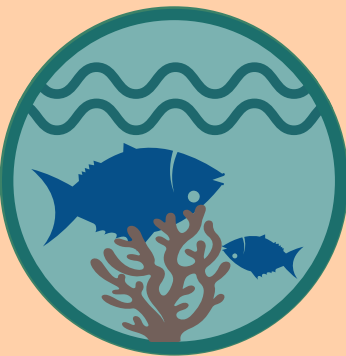
Increase in greenhouse
gases and combustion
of fossil fuels



Exponential increase
in population



Destruction of
ecosystems and
deforestation



Destruction of
marine ecosystems

Veolia combats climate change

through it's activities & solutions

DEVELOP BIOGAS
CAPTURE FROM
WASTE AND
CONVERT IT



INCREASE
MATERIAL
RECYCLING



CIRCULAR
ECONOMY
APPROACH

IDENTIFICATION OF
WATER STRESS RISKS,
WATER RECYCLING &
WASTEWATER TREATMENT



MAXIMIZE ENERGY
EFFICIENCY
& PRODUCTION OF
RENEWAL ENERGY
SOURCES