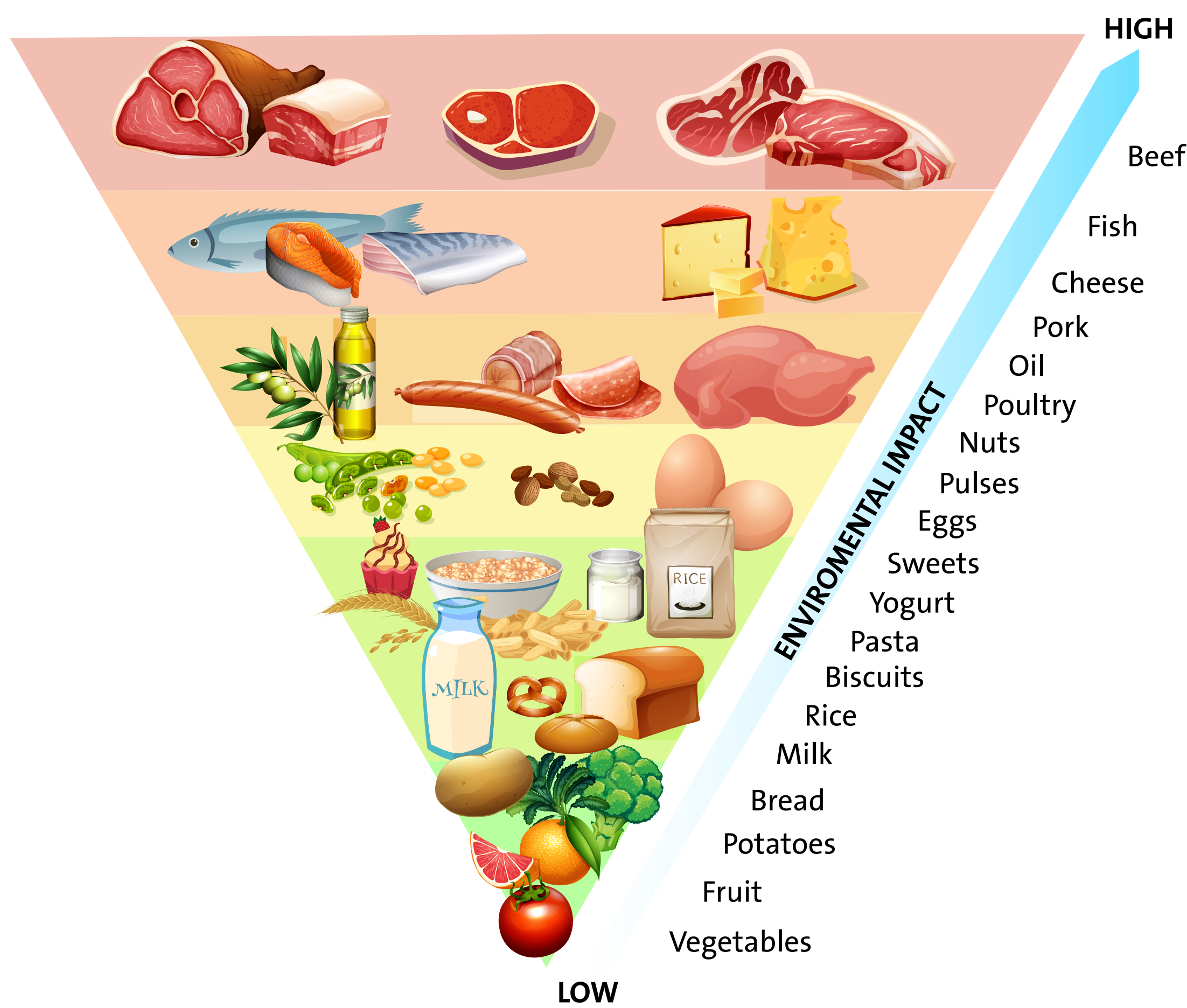


FOOD PRODUCTION FACT

ENVIROMENTAL PYRAMID

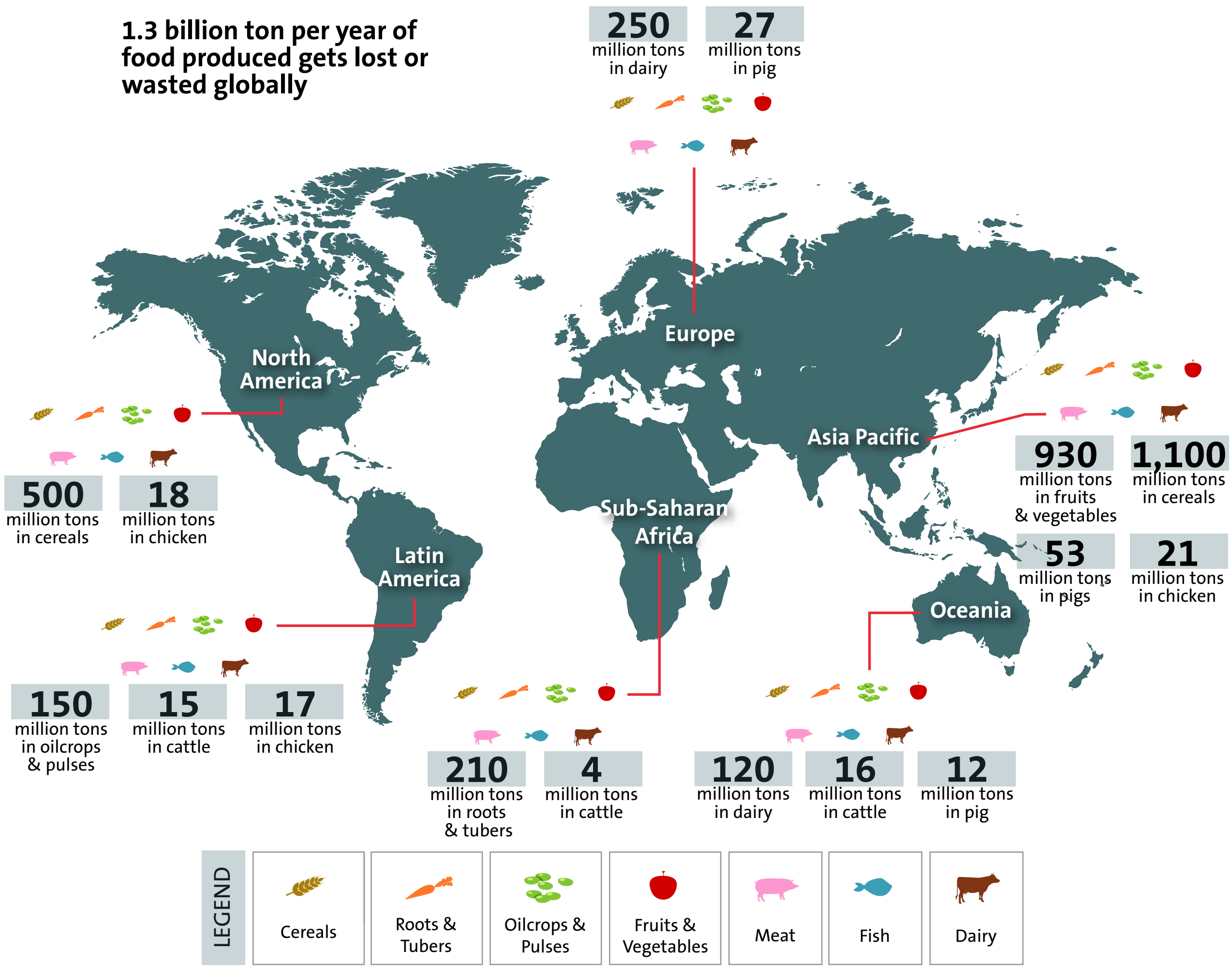


The Food Pyramid aligning nutritional value and environmental impact.

Source: Barilla Center for Food and Nutrition. Double pyramid. Available at, [https://www.barillacfn.com/en/dissemination/double\\_pyramid/](https://www.barillacfn.com/en/dissemination/double_pyramid/); 2020.

FOOD PRODUCTION VOLUME

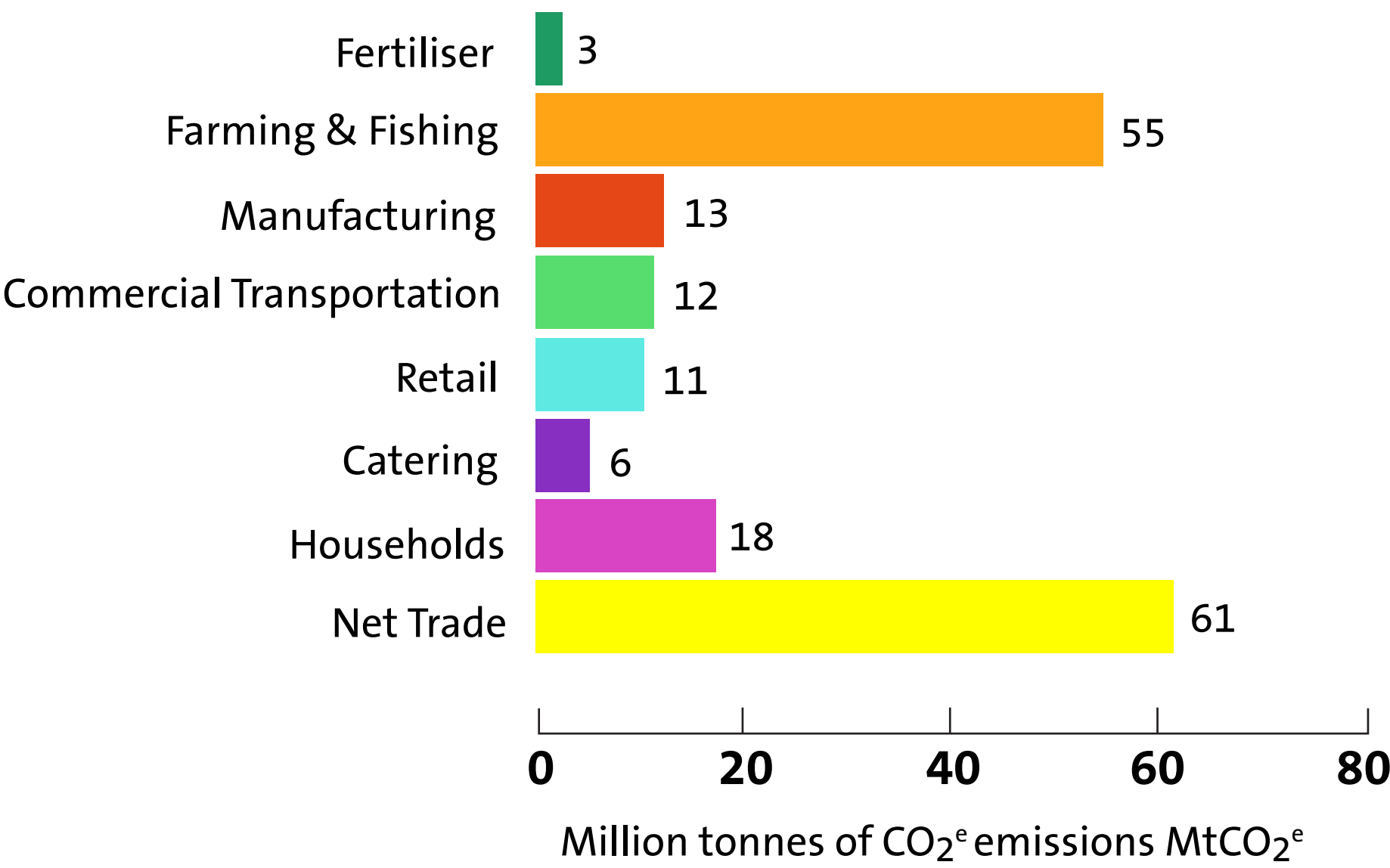
1.3 billion ton per year of food produced gets lost or wasted globally



Food production volumes per commodity group per region.  
(Note: Figures indicated on the map are in approximation)

Source: FAO. Global food losses and food waste – Extent, causes and prevention. Rome. 2011.

GREENHOUSE GAS EMISSIONS



Greenhouse gas emissions from the UK agri-food sector

Source: Tassou Savvas A, et al. Energy demand and reduction opportunities in the UK food chain. Proceedings of the Institution of Civil Engineers; Energy 167 August 2014 Issue EN3. p. 162–70. <https://doi.org/10.1680/ener.14.00014>.